



# HMSBAR 606 Specification



## Sheerleg Barge –Capacity up to 2,200t

Year of construction	1981
Classification	LR X 100 A 1 Sheerlegs pontoon LA

### Dimensions

Length	83.20 m
Beam	36.90 m
Depth	7.00 m
Draught (minimum)	3.00 m
Draught (maximum)	6.02 m

### Propulsion

Main engines	2 x 1,000 kW
Bowthruster	2 x 440kW

### Moorings

Aft	3 x 25 tonnes capacity winches with 500 m of 44 mm diameter wire rope & 2 x 40 tonnes winches capacity 625 m of 48 mm diameter wire rope
Forward	3 x 25 tonnes winches, capacity 500 m of 44 mm diameter wire rope

<b>Accommodation</b>	for 30 people (can be increased).
----------------------	-----------------------------------

Location:	<b>Netherlands</b>	Sale Price	<b>n/a</b>
-----------	--------------------	------------	------------

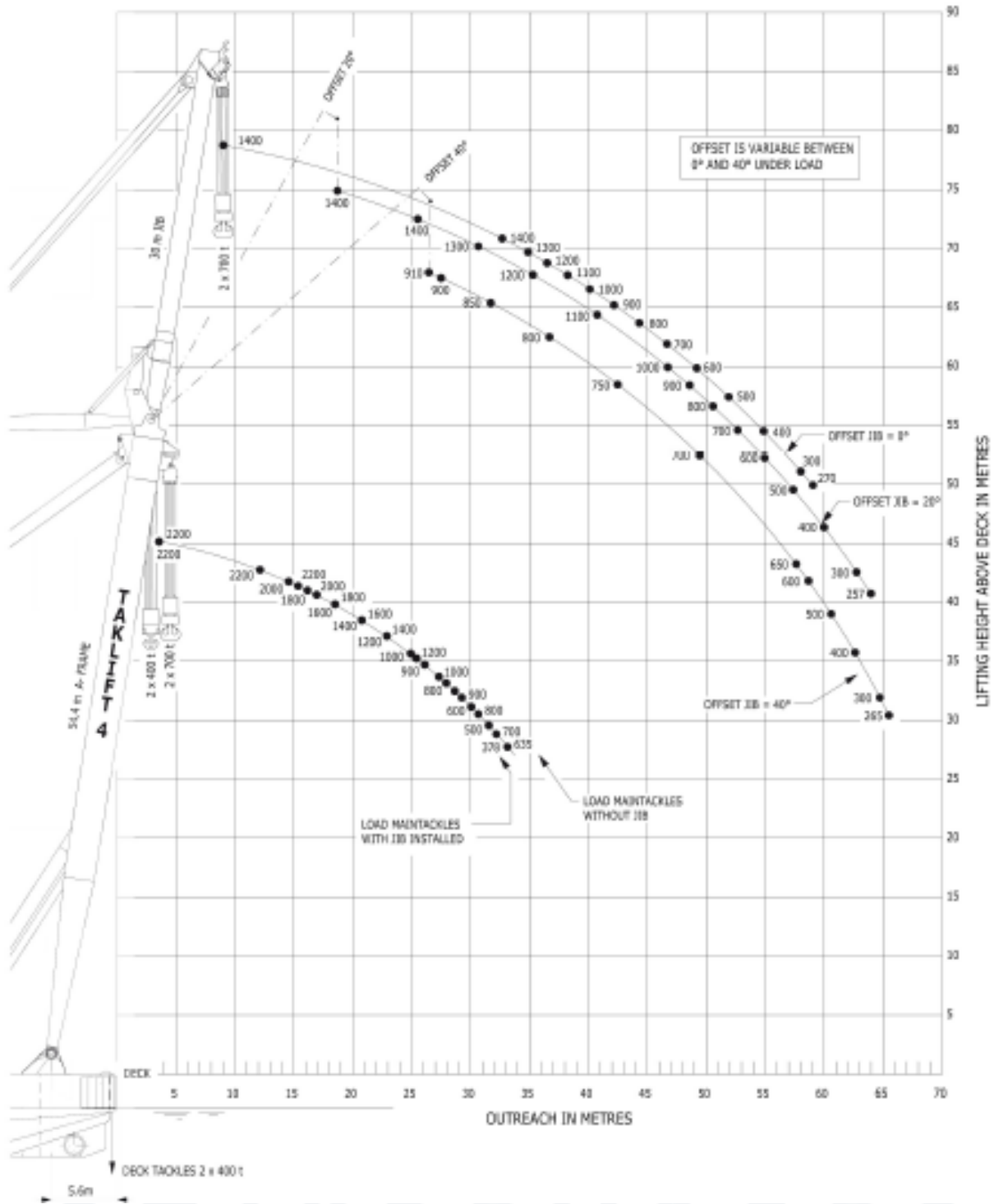


# HMSBAR 606 Lifting Chart

HARMONY MARINE SHIPBROKERS

**Notes:**

- Both main tackles and jib tackles can operate together, load capacity on request.
- Loads in metric tons [t].



**DISCLAIMER :**Particulars given herein are entirely without warranty as to correctness and interested parties must satisfy themselves by inspection or other means of the details of the vessel referred to.

Phone: +356 794 857 83

<http://www.hmsbroker.com/>

Email: [info@hmsbroker.com](mailto:info@hmsbroker.com)